

THE INSIDER

A NATIONAL PROPERTY INSPECTIONS AND GLOBAL PROPERTY INSPECTIONS MONTHLY PUBLICATION

Issue # 4 - April 2010

INSIDE THE INSIDER

- 1 FROM THE PRESIDENT
- 2 MARKETING INSIGHT
- 3, 4 HIGHLIGHTS

TECHNICAL BULLETINS

TOPIC: Hinged Truss Plates

TOPIC: Mortarless Brick

FROM THE PRESIDENT

To no one's surprise, the U.S. Congress passed their massive health care bill. Politics aside, this is not good for the economy, nor is it good for long-term health care. This was a power-grab. If the politicians honestly thought this was a good thing, it would take effect immediately rather than years down the road. They want people to forget and adapt. I don't believe in dwelling on the negative, so I will leave it at that.



Roland Bates
President

The U.S. auto industry has rebounded a little. That is good news and let's hope that trend continues. Some of the improvement is due to their own efforts and some is due to Toyota's woes. Toyota might deserve some of the bad rap they are getting, but a lot of the reports about runaway cars is a bunch of baloney. Those onboard computers do not lie. It's like when a city bus with only 15 passengers is involved in an accident; 25 people file personal injury claims.

A number of you have had good success with our real estate agent continuing education classes. The agents who have attended seemed appreciative and naturally we hope this leads to some additional long-term business for you. We are working on approvals one state at a time. No two states are the same. It takes a lot of digging to figure out what they want. In some states, they focus on the quality and content of the course, while in other states they are concerned about who is presenting the course. Thus, we need to know who will present the courses so we can submit your resumes along with the applications. We hope to eventually offer these courses online for a nominal fee.

Though not robust, the U.S. and Canadian economies are on the upswing. The DOW is pushing 11,000 and 30 year fixed rate mortgages are hovering around 5 percent. Unemployment in the U.S. is approximately 10 percent, which sounds horrible. However; when you consider we've always had a chronic 5 percent unemployment rate, 10 percent is not as bad as it sounds.

» CONTINUED ON PAGE 4

NETWORKING

Networking is an easy (and free) way to get your name out there, talk about your services and establish yourself as an expert in the field! Here are some ways to help you get started with networking.

- Know Your Intention. Before you attend a meeting, you should know what you would like to happen. Plan the scenario out in your mind.
- Try out a networking event before you join. Join several groups so you can break up the monotony. For instance, try to attend one breakfast meeting, one lunch meeting, one dinner meeting and one “mixer” each month.
- Be Curious About Others. Set a goal to have a conversation with at least three people each time you attend a networking event. Ask them for two or three business cards that you can share with others, and write down a note on it to remind you of how you might help them. When you get back to your office, put them in your contact list.
- Practice answering the question, “What is your business?” Make sure you have a quick, specific answer that you can say with ease and confidence.

» Source: Tickled By Life

PROMOTIONAL PRODUCT



We came across this umbrella and think it would be a good promotional product. However; we would only place an order if there is enough interest so that they could be purchased at a reasonable price.

If you would be interested in ordering this product, please contact Kim ext. 23 and let her know that you're interested and how many umbrellas you might

be interested in ordering. We will notify you if we have enough interest and decide to place an order.

The umbrella is a 42-inch windproof folding umbrella with an auto open button. It includes a nylon sleeve and would have the NPI/GPI logo printed on it. The price would range between about \$8 to \$10 per umbrella, depending on the quantity ordered.

Quarterly Commercial Inspector Newsletter

The quarterly Commercial Inspector newsletters are now available in the Marketing Center tab on your Web site. Log in to your personal Web site, click on the Marketing Center tab, select the newsletter and type in your e-mail address. It will be personalized with your information and sent to you for you to then forward on to your contacts.

WELCOME TO THE FAMILY

Help us welcome the newest members of our NPI/GPI family.



Brandon Clark
Modesto, CA



Samuel Garrett
Denair, CA



Rodney Maynard
Bowling Green, KY

CONGRATULATIONS

Congratulations on expanding your business by hiring an employee.

Tom Bushnell



Employee of
Jeff DeOliveira
Valley Springs, CA

CONGRATULATIONS

Congratulations on receiving your HUD 203(k) approval!

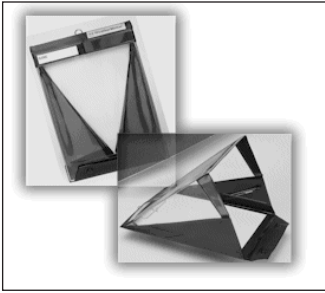


Rich Burhman
Hedgesville, WV



Tom Sansone
Rochester, NY

WEATHERWRITER



Jim and Susan Giuffre wanted to recommend a product that other inspectors might find useful. When you're working outdoors on rainy or windy days, a WeatherWriter could help to protect your paperwork.

The WeatherWriter is an all-weather clipboard that enables you to continue writing in the rain, snow, sleet

and wind while the paper remains protected and dry.

According to the product's Web site, WeatherWriter features include:

1. Spring-loaded clear "hood" that pops open and stays open to protect paperwork on all sides.
2. Snaps flat when closed to protect your paperwork when not in use, and holds over 150 sheets.
3. Regular clipboard on the back for a clear day.
4. Two internal pen pockets, a name card and an external ring for hanging your WeatherWriter.
5. Available in various sizes and paper orientations to fit your document.

For more information, go to <http://www.weatherwriterusa.com/id47.html>.

CONGRATULATIONS

Congratulations on being elected to the governing board of the International Association of Electrical Inspectors chapter of South Carolina!



Hank Shadwell
Dalzell, SC

AN NPI SLEEP OVER

Pete Lauterer, Keven Cossler and Byron Ling had a CE class in Wilmington, NC. Because they live a distance away, Susan and Jim Giuffre opened their home to them for the two nights.

During their stay, they exchanged many notes and e-mails and Susan and Jim showed them their office and explained how they are doing things as a husband and wife team. They also discussed specific state requirements, and marketing techniques.

This shows the benefits of being a part of a franchise!

IMPORTANT RECALL



The U.S. Consumer Product Safety Commission, in cooperation with Dimplex North America, announced a voluntary recall of about 700,000

remote control kits for electric fireplaces and stoves. The plug-in wall unit can overheat, posing a fire and burn hazard to consumers.

The recalled remote control kits are used with Dimplex, Electraflame, Symphony, Optiflame, Electralog and Charnglow brand electric fireplaces, stoves and fireplace inserts. Recalled model numbers include 47-1001, 47-1010-R and APT-1315. The model number is printed on either the plug-in unit or the hand-held remote control.

Consumers should immediately stop using the remote control kits, unplug the power cord from the control kit's wall unit, remove the wall unit from the electrical outlet and contact Dimplex for a free replacement kit.

For more information, go to <http://www.cpsc.gov/cpsc-pub/prerel/prhtml10/10167.html>.

CONGRATULATIONS

Congratulations on your anniversary with National Property Inspections, Inc.



Rich Buhrman
Hedgesville, WV

5 YEARS



Steve Genzale
Nazareth, PA

5 YEARS



Sean Green
Flower Mound, TX

5 YEARS



Dave Murdick
Slippery Rock, PA

5 YEARS



Kobin Reynolds
Tyler, TX

5 YEARS



Mike Salinas
Lake Worth, FL

5 YEARS



Larry Thompson
Norcross, GA

5 YEARS

FROM THE PRESIDENT (CONT'D)

While we encourage commercial clients to contact you directly, the corporate office has been asked to coordinate placement, and in some cases payment, for several national accounts. We have received confirmation of at least 75 inspections that will be forwarded on to you, the inspectors, in the next few weeks from Scioto, Alacrity and Realty Income. While we can't guarantee you will receive an order, please know that the opportunity exists and say yes when Kenn calls.

Work hard today and plan for tomorrow. Yesterday no longer matters. Please stay in touch. We love hearing from you.

Roland Bate

CONGRATULATIONS

Congratulations on passing the Texas Real Estate Commission (TREC) inspector exam!



Pat Standefer
Plano, TX



Brad Dawkins
Cypress, TX

THE INSIDER



A PRODUCTION OF
NATIONAL PROPERTY INSPECTIONS, INC

9375 BURT STREET, SUITE 201
OMAHA, NE 68114
PHONE (800) 333-9807



TECHNICAL BULLETIN
April 2010

TOPIC: Hinged Truss Plates

I recently received a phone call and pictures from Matt Tracy (NPI, Feasterville, PA), regarding some unusual truss plates in an attic during the course of his inspection. He said they were uniform in location (first hint), had 2.5-centimeter holes in them (second hint) but I was confused with the “holes in gusset plates.” I thought maybe they were holes for running electrical lines through. Then Matt said there were spaces in between where the top chords of the trusses should have maybe been butted together. It turns out they were hinge plates for top loading piggy-back trusses.



Photo courtesy of Matt Tracy

The hinge plate has historically been utilized in the manufactured housing industry to meet transportation height restrictions on shipping completed units. It can also be used to speed up the application of the cap section of a piggyback truss in conventional truss construction.



Source: ABC Walls Bob Sargent

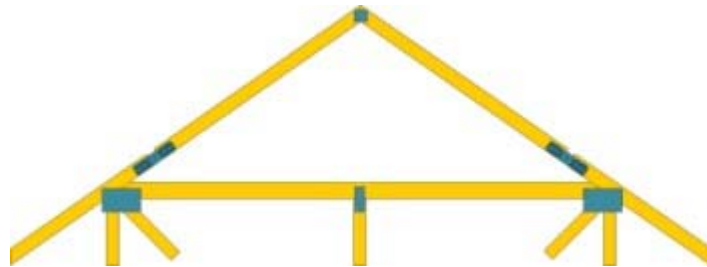
This technical bulletin has been drafted to be general in nature and not technically exhaustive.



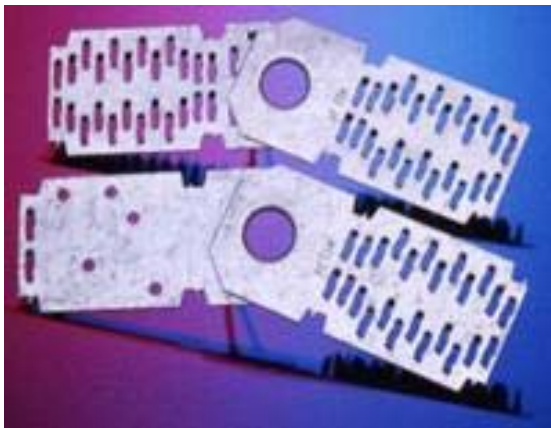
The MiTek Hinge Plate allows truss sections to fold down flat while remaining completely aligned and in plane. That makes large trusses easier to assemble

and deliver, and easier for the framer to handle and install on site - all without the extra lumber labor that goes into the cap section of a piggyback truss. The hinge plate is applied to each top chord extension at the appropriate location to enable one extension to fold down onto the flat section of the top chord and the other extension to fold on to the first.

Once erected, the top chord extensions are rotated or lifted to form the peak of the truss. Several methods may be used to fasten the extensions together: MiTek Nail-on Plates, plywood or an attachment to a ridge rafter are all possible connections methods.



MiTek's hinge plates are manufactured from 18 gauge ASTM A-653 galvanized steel that is zinc coated. The overall dimensions of the plate are 5.7 centimeters x 21.3 centimeters and each end of the BEH hinge plate contains 48 teeth. The Peak Performer has five nail holes at one end and 48 teeth at the other end of the plate.



Source: ABC Walls Bob Sargent



COMMERCIAL TECHNICAL BULLETIN

April 2010

TOPIC: Mortarless Brick

Mortarless brick siding systems are fairly new on the market and are used in both commercial and residential applications. This covering is made of high-strength concrete bricks that overlap and interlock to create a strong, water resistant brick veneer. This system can be installed to the wall framing members using manufacturer recommended installation methods. The photo on the right is a patented brick designed manufactured by Novabrik. This design uses screws that are installed through the brick to hold it in place, while other manufacturers use metal clips or brackets to secure the brick to the wall.



Photo provided by
Novabrik

The dimensions and appearance of the brick faces are similar to traditional split-faced bricks, and like bricks used for conventional veneer walls, they are installed in staggered rows.

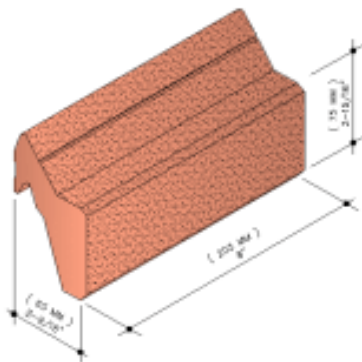


Illustration provided by PATH

Hidden from view is the unusual shape of the cast block, which allows shingle-like overlapping. Because the system does not require footing or mortar, it can be used on new or existing buildings. Installers stack the blocks in rows and fasten them to vertical furring strips attached to the wall sheathing and framing. The furring strips provide a positive connection and create an air space, allowing the veneer surface to breathe and providing drainage for any moisture that may penetrate. Thermal insulation characteristics are about the same as common face brick (R-0, 11) and each unit weighs about 4 pounds.

The mortarless system falls under the governing codes and regulation in regards to masonry when installing units. The concrete units have a minimum 28-day compressive strength of 3,500 psi and are classified as Type II nonmoisture-controlled units. Manufacturers have tested the performance of mortarless brick attachments under wind suction and they have exceeded the requirements for brick attachments.

The manufacturer provides an installation manual to assist with project planning. It takes 6.1 blocks to cover one square foot of wall area. Additional cast block profiles are available for inside and outside corners, and window sills. Exterior walls must be covered with conventional OSB sheathing and barrier wrap, and fall within certain size guidelines to support the weight of the block material. Windows and openings require proper barrier flashing. Furring and starter strips are then installed on the OSB at each stud location, using

This technical bulletin has been drafted to be general in nature and not technically exhaustive.



corrosion-resistant screws. To begin the installation of the brick facing, each block in the first

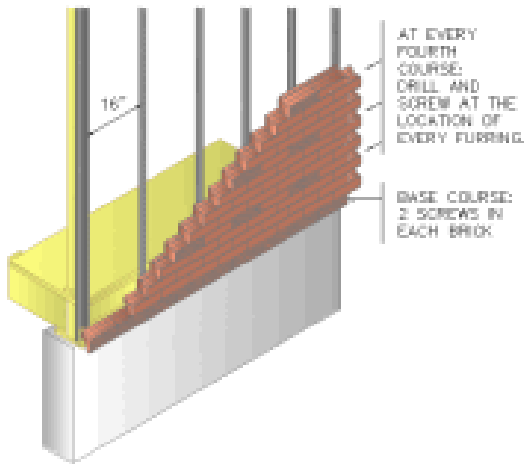


Illustration provided by PATH

(bottom) row requires attachment with two screws to the starter strip. From this point, each course of blocks is laid out like a traditional brick wall. The shape of the blocks allows subsequent rows to interlock, so that connections need to be made only for every fourth course by screwing the upper tab of the brick into the furring strips.

The installation manual outlines procedures for constructing inside and outside corners, accommodating windows, doorways or other architectural features, and recommends terminations to the soffit. BPC starter strip and window trim profiles are also available.

Because the system can be installed by workers without masonry skills, the installation cost of the mortarless brick system is less than that of conventional brick walls. According to the manufacturer, the system costs about the same as high-end wood siding. Like traditional split-face brick, the system is strong and durable and will not dent, chip or fade in color. It helps to avoid some of the pointing and moisture problems that can occur over time when conventional mortar deteriorates. The mortarless character of the system also limits damage that might occur from movement and cracking during settling or seismic activity. The system resists seasonal freeze thaw cycles and water penetration by providing an interior drainage plain from the barrier wrap.

For more information, go to www.pathnet.org.