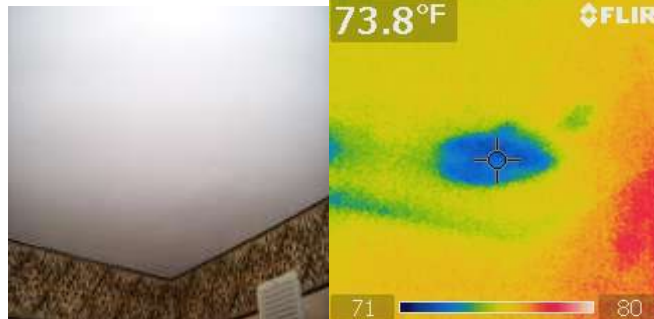


INFRARED IMAGING

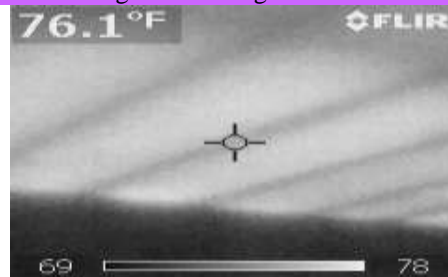
USING HEAT INFORMATION TO SEE THE TRUE COLOR OF YOUR HOME

National Property Inspections (NPI) is very excited to offer *thermal imaging* as a part of our services. Using an infrared camera, we scan all accessible interior surfaces of a home. The camera detects even minute temperature changes that can indicate the presence of moisture, areas of missing insulation in walls and ceilings, plumbing leaks and their sources, and electrical faults in wiring and in the panel.

“naked eye” image of ceiling “Thermal” image of same ceiling



Infrared image of a ceiling that is not insulated



Electrical service panel Infrared image of panel



How Thermal Imaging Works

Thermal imaging uses a specially-designed camera to register changes in temperature, or heat energy, across surfaces in a home. Trained inspectors use this radiometric infrared camera to scan the home for evidence of temperature changes. The camera converts the information into a digital image with heat changes depicted in various colors or shades of gray. The images are then interpreted by the inspector to provide the home owner, or buyer with additional information. For more details on the technology, possible benefits and types of inspections offered, please call your NPI inspector.